



**ATLAS**  
DISPOSAL

## 2026 RESIDENTIAL GUIDE

Atlas Disposal provides residential waste collection and street sweeping services in the City of Rancho Cordova.

RANCHO CORDOVA  
CALIFORNIA



Dear Rancho Cordova Resident,

On behalf of Atlas Disposal, we are honored to serve as your residential waste collection and street sweeping provider.

Atlas Disposal has been in the waste and recycling industry for over 27 years. With an energetic, local team passionate about recycling, we are highly dedicated to providing you with reliable collection services that serve as a model of effective communication, community engagement, and sustainability. We like to say that we're:

*"Large Enough to Meet Your Needs, Small Enough to Care!"*

Our company has deep ties to the City of Rancho Cordova and our headquarters are located down the street from City Hall. The Atlas Disposal team has an extensive working knowledge of Rancho Cordova's needs and is dedicated to innovative, community-driven solutions. As a proud sponsor of numerous city events, a member of the Chamber of Commerce, and longtime Magic Maker for the Cordova Community Council, we are committed to supporting and enhancing the quality of life in Rancho Cordova.

Please don't hesitate to reach out to our team with any questions. We are here to serve you!

Sincerely,

Brian Waters, President and CEO

## CONTACT US:

916.288.2800

RCCustomerService@AtlasDisposal.com



## TABLE OF CONTENTS

General Collection .....	4
Atlas Disposal App.....	5
Food Waste Recycling .....	6-7
Recycling.....	8-9
Bulky Pick-up.....	10
Additional Services.....	11-12
Additional Guidelines.....	13
Household Hazardous Waste (HHW) .....	14
Payment .....	15
About Us .....	16
Collection Calendar .....	Tear Out





## Please follow these guidelines to help ensure collection staff can efficiently service your carts:

**Collection Schedule:** Food waste recycling and trash collection is every week. Recycling collection is every other week. Check the Atlas Disposal App or attached service calendar to confirm collection days.

**Proper Sorting:** Residents are required to place proper materials in each cart. Please use the Atlas Disposal App or the material sections in this guide for information.

**Cart Placement:** Carts must be a minimum of 3 feet from each other and 6 feet from cars to allow safe servicing. Carts must be on the street by 6:00 AM on your collection day.

**Overflow:** All material must be contained inside each cart with lids completely closed.

- Flattened cardboard may be placed next to your blue recycling cart.
- Up to four (4) bags of leaves may be placed next to your green organics cart.

**Keep it loose:** Please do not place recyclables and yard waste in bags.

- Compostable bags for food waste are acceptable.
- Leaves may be bagged and placed next to your green organics cart.

**Dial Before You Pile!** You must schedule a pickup before placing bulky items out for collection.

**Mandatory Service:** Residential customers are required to have waste collection service. No service holds or reduced service schedules are available.

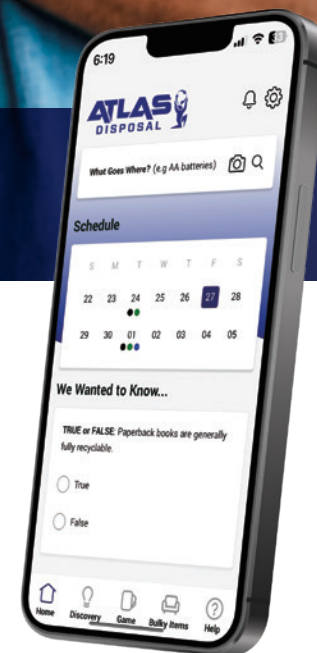
Please visit [CityofRanchoCordova.org/RanchoRecycles](http://CityofRanchoCordova.org/RanchoRecycles) for more information.

On our website, you can:

1. View this guide online
2. Sign up for text and email service reminders
3. Download the Atlas Disposal app
4. View your Collection Calendar
5. Schedule Bulky Item Pickups



## DOWNLOAD THE ATLAS DISPOSAL APP!



### APP FEATURES:

- Personalized Collection Schedule
- “What Goes Where” Search Tool
- Collection Reminders
- Report a Problem
- Pay your Bill
- Schedule Bulky Item Pickups
- And so much more!



SCAN THE QR CODE TO  
DOWNLOAD THE APP

### FOLLOW US ON SOCIAL MEDIA

f @AtlasDisposal    i @AtlasDisposalIndustries    in Atlas-Disposal-Industries



## FOOD WASTE RECYCLING PROGRAM

- Collect food scraps and food-soiled paper using a counter-top pail, compostable bag, or other small container.
- Place acceptable yard waste directly in your green organics cart.
- To mitigate odors/vectors consider using a compostable bag (paper or plastic) to contain food scraps (especially animal products), placing food scraps in the freezer until collection day, and/or layering food and yard waste in your green organics cart. You can also sprinkle baking soda in your cart to reduce odors.

## WHAT IS FOOD WASTE?

Food waste includes items you usually discard when preparing meals, food scraps from your plate when you are finished with a meal and food-soiled paper items.



## ACCEPTABLE MATERIALS

### FOOD WASTE



### FOOD SOILED PAPER



### YARD WASTE



- ✓ **Food Waste** (fruit, vegetables, meat, bones, cheese, etc.)
- ✓ **Branches less than 4" in diameter**
- ✓ **Cut flowers**
- ✓ **Grass clippings**
- ✓ **House plants**
- ✓ **Leaves\***
- ✓ **Shrubs**
- ✓ **Weeds**
- ✓ **Wood chips**
- ✓ **Yard trimmings**
- ✓ **Dead plants**
- ✓ **Food-soiled paper**
- ✓ **Napkins**
- ✓ **Paper towels**
- ✓ **Coffee filters/tea bags**

\*For more Information about extra leaf Collection. Please reference page 12 of this service guide.

## UNACCEPTABLE MATERIALS



- ✗ **Plastic bags**
- ✗ **Film plastic**
- ✗ **Polystyrene foam**
- ✗ **Palm fronds**
- ✗ **Rocks**
- ✗ **Sod**
- ✗ **Flowerpots** (ceramic and plastic)
- ✗ **Pet waste**
- ✗ **Kitty litter**
- ✗ **Dirt**
- ✗ **Household trash**
- ✗ **Wax-lined paper products**

## ACCEPTABLE BAGS



## UNACCEPTABLE BAGS







## MIXED RECYCLING PROGRAM

- Please **DO NOT** put any **DIRTY OR SOILED ITEMS** in your recycling cart.
- Please make sure your recyclables are **EMPTY, CLEAN, and DRY** before placing them in your recycling cart.
- Please **CRUSH and FLATTEN** materials such as cardboard.
- Please **DO NOT BAG RECYCLABLES**. Materials should be kept loose in the container.

## EXTRA OR REPLACEMENT CARTS

Each household may request up to 1 additional blue recycling cart or 1 additional green organics waste cart at no additional charge. Residents may change the size and/or the number of their carts once per year at no additional charge. The size of the trash cart determines your monthly fee.

For more information regarding rates and service changes, please visit [CityofRanchoCordova.org/RanchoRecycles](http://CityofRanchoCordova.org/RanchoRecycles).

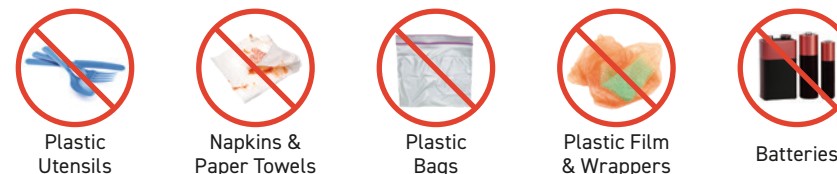


## ACCEPTABLE RECYCLE MATERIALS



- ✓ **Mixed Paper:**  
White and colored paper, newspaper, magazines, and catalogs
- ✓ **Cardboard:**  
Cardboard boxes, cereal boxes, tissue boxes, and egg cartons
- ✓ **Glass:**  
beverage bottles and food jars
- ✓ **Plastics (labeled #1–#7):**  
Milk jugs, rigid plastics, shampoo bottles, trays and flowerpots
- ✓ **Cans:**  
Metal food cans, aluminum cans, aluminum foil and aerosol cans (empty)
- ✓ **Small Scrap Metal:**  
(less than 10 lbs.) All-metal tools (wrenches, pliers, files and aluminum siding)

## UNACCEPTABLE RECYCLE MATERIALS



- ✗ Plastic utensils
- ✗ Food
- ✗ Liquids
- ✗ Hazardous waste
- ✗ Napkins and paper towels
- ✗ Hoses
- ✗ Ceramic (dishes and mugs)
- ✗ Plastic bags
- ✗ Wood/Leaves
- ✗ Plastic film/wrapper
- ✗ Styrofoam
- ✗ Packing peanuts
- ✗ Clothing
- ✗ Batteries\*
- ✗ Electronics\*
- ✗ Sharps\*/Medical Waste

\*Learn about special collection options for these materials on page 11.

Atlas Disposal offers up to **THREE BULKY ITEM PICK-UP** appointments per year at no extra charge. Use the Atlas Disposal App or call **916.288.2800** to schedule your pickup before placing items in the street.

## ACCEPTABLE MATERIAL

- |   |  |
|---|--|
| ✓ Appliances  | ✓ Mattresses (bagged only)   |
| ✓ Barbecues   | ✓ Microwave ovens  |
| ✓ Bagged leaves   | ✓ Plastic pipes (maximum 6 feet in length)                             |
| ✓ Branches (maximum 4 inches in diameter and 6 feet in length)                        | ✓ Televisions  |
| ✓ Carpets   | ✓ Tires  |
| ✓ Computers, monitors, fax machines, printers, cell phones and other electronic waste | ✓ Toys   |
| ✓ Furniture (chairs, sofas, dining tables)  | ✓ Untreated wood (including untreated lumber and disassembled fencing) |
|   | ✓ Lawn mowers (must be empty)  |

## UNACCEPTABLE MATERIAL

- |  |  |
|--|--|
| ✗ Automobiles or auto parts  | ✗ Large tree stumps  |
| ✗ Boats or boat parts  | ✗ Medical waste  |
| ✗ Backyard spas  | ✗ Pool chemicals   |
| ✗ Batteries of any kind  | ✗ Propane tanks  |
| ✗ Bullets, shells and explosives   | ✗ Steel pipes  |
| ✗ Construction materials (asphalt, concrete, dirt, rocks, bricks, sheetrock, roofing material) | ✗ *Hazardous waste of any kind (paint, pesticides, cleaning products, light bulbs, etc.) |

*\*See page 14 for details on proper disposal of these items.*

- Pile must not exceed 10 cubic yards (10'x7'x4').
- Items must be out by 6 a.m. in front of your house on your scheduled collection day, and no sooner than 24 hours before the pickup.
- Items must be 6 feet from vehicles and 3 feet from carts.
- Do not place items in the gutter, and do not block the sidewalk or road.
- Leaves and grass clippings must be bagged.
- Property owners or tenants can schedule bulky item pickups.
- Do not place any hazardous materials in your bulky pile (Oil, liquids, paint, etc.)

**! IT IS ILLEGAL TO THROW ELECTRONIC WASTE IN THE TRASH. SCHEDULE A BULKY ITEM PICK-UP FOR DISPOSAL.**  
(TVs, cell phones, computer monitors, etc.)



## MEDICAL SHARPS



### COLLECTION OF HOME-GENERATED SHARPS BY APPOINTMENT

- To request a sharps container, schedule a pickup, or for more information, call Atlas Disposal at 916.288.2800.
- Pickups are by appointment only. Do not place sharps containers out for collection without scheduling a pickup.
- Home-generated sharps (syringes, lancets, scalpels, and any needle/ sharp object used for healthcare purposes) must be placed in an approved sharps container. The lid must be secured prior to placing it out for collection.
- Residents also have the option to mail back their sharps for a fee. Please contact Atlas Disposal at 916.288.2800 for more information.

## USED MOTOR OIL & FILTERS



### COLLECTION OF USED MOTOR OIL AND FILTERS ON COLLECTION DAY

- To request free oil and oil filter containers, call Atlas Disposal at 916.288.2800.
- A maximum of 3 gallons of oil will be collected at each pickup.
- Place the oil/oil filter recycling containers on the ground next to your blue recycling or green organics waste cart. Do not place them on or in your cart.
- You may use your own containers if you choose. Oil must be placed in a clear plastic jug with a secured lid (please also tape the lid closed). Oil filters may be placed in a sealed plastic bag (such as a Ziploc).
- Do not place used motor oil in milk cartons.

## BATTERY COLLECTION



### COLLECTION OF HOUSEHOLD BATTERIES ON COLLECTION DAY

- Only household batteries (dry cell, alkaline, rechargeable, 9V, lithium, etc.) are allowed in this program. Lithium batteries **MUST** be taped at both ends to reduce the risk of fire.
- Batteries **MUST** be placed in a sealed plastic bag, (such as Ziploc).
- Place your sealed bag on top of your recycling container on collection day and it will be removed. No appointment is required.





## STREET SWEEPING

The street sweeper will not be able to service your street where there are parked vehicles and other obstructions, including but not limited to leaves, branches and low-hanging tree limbs. Please visit [CityofRanchoCordova.org/RanchoRecycles](http://CityofRanchoCordova.org/RanchoRecycles) to view the street sweeping schedule and map. For best results, please park your vehicle off of the street on your scheduled street sweeping day.



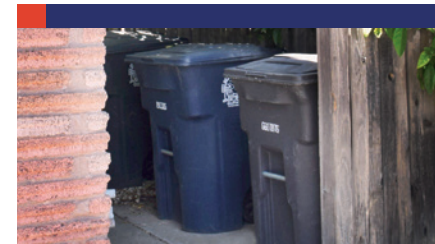
## EXTRA LEAF COLLECTION

Atlas Disposal will collect **up to 4 extra bags of leaves** on your regular green organic cart collection day at no additional cost. Simply bag your extra leaves in 30-gallon bags and place them next to your green organics cart. Bags must only contain leaves, no other materials are allowed.



## CART PLACEMENT

Place carts **on the street by 6:00 AM** on your collection day. Carts must be side-by-side and **3 feet from each other**, from the curb and objects like mailboxes and basketball hoops, and 6 feet from larger objects, like cars. Please remove carts from the curb within 12 hours of service.



## CART STORAGE

Carts must be **stored in backyards, in a garage, behind a fence or gate**, or placed in a location that is not visible from the street.

## HOLIDAY TREE RECYCLING

Simply put your tree out to the curb **December 26th—January 16th** on your regular collection day, or cut it up and place it in your green organics waste cart. Please check the calendar for your pick-up days.



**ACCEPTABLE TREES**

Fresh-cut holiday trees



**UNACCEPTABLE TREES**

Flocked and artificial trees

## MOVING?

To discontinue service, please call Atlas Disposal at 916.288.2800. **Carts should be left in a secure location** for the next resident.

## FREE COMPOST FOR RESIDENTS

Atlas Disposal offers **3 cubic yards of compost per year** to each Rancho Cordova residential customer at no charge. Drop by 11361 White Rock Road on weekdays between 8:00 AM – 1:30 PM with your proof of residency. Residents must load compost themselves, so please bring a shovel and an appropriate container or vehicle. Call 916.288.2800 for more information or for access if the front gate is closed.

## RECYCLE MORE, REDUCE TRASH AND SAVE MONEY!

Atlas Disposal offers **32-gallon, 64-gallon and 96-gallon carts** for trash collection. Most Rancho Cordova households can use a 32-gallon trash cart if the recycling and organics waste programs are used correctly. Call Atlas Disposal today at 916.288.2800 to order a smaller trash cart and **start saving money!**



32-gallon



64-gallon



96-gallon

## HOUSEHOLD HAZARDOUS WASTE (HHW)

Residents may take household hazardous waste, including **batteries, fluorescent bulbs/tubes, used oil/filters, paint, pesticides and cleaning products, to the following facilities at no charge.**



### Kiefer Landfill\*

12701 Kiefer Blvd., Sloughouse  
Call **916.875.5555** for hours of operation.

*\*This location only accepts antifreeze, batteries, oil, oil filters and paint*

### North Area Recovery Station

4450 Roseville Rd, North Highlands  
Call **916.875.5555** for hours of operation.

### Sacramento Recycling & Transfer Station

8491 Fruitridge Road, Sacramento  
Call **916.379.0500** for hours of operation.

### Special Waste Collection Center (SWCC)

9255 Disposal Lane, Elk Grove  
Call **916.478.2228** for hours of operation.



**Check Page 11 for more information about sharps, batteries, and oil collection service.**

## THREE CONVENIENT WAYS TO PAY

Atlas Disposal has a range of convenient options for you to pay your residential waste collection and street sweeping service bills listed below. Setting up your payments is easy and takes less than 5 minutes, and our team of local customer service representatives is standing by to assist you with this process. If you have any questions or concerns, please contact Atlas Disposal at 916.288.2800 or [RCCustomerService@AtlasDisposal.com](mailto:RCCustomerService@AtlasDisposal.com) for further assistance.

### 1

### AUTO-PAY/ONLINE BILL PAY

SCAN



- Access Atlas Disposal's Secure Online Bill Pay platform by **scanning this QR Code** with the camera on your smartphone or by visiting the Customer Portal on [AtlasDisposal.com](https://AtlasDisposal.com).
- Select **'Register Now'** and enter your account number and access code shown on the letter you received in the mail.
- Enter your **email address and password** to create your account. You will receive a verification email to complete the account setup.
- Once your account is created, you can **set up auto-pay** or you can **visit this website every month** to pay your bill.

### 2

### BANKING BILL PAY

- Set up a **new recurring payment** through your bank to Atlas Disposal. Please contact us if you need any billing details for your bank as part of this process.

### 3

### PAPER BILL PAY

- You will also receive a paper bill by mail that you can **pay directly**.
- You can pay this bill **by check** by sending your bill to:  
Atlas Disposal Industries, LLC  
PO Box 8631  
Pasadena, CA 91109-8608
- You can pay this bill **by phone** by contacting Atlas Disposal at 916.288.2800.
- You can pay this bill **in person** by visiting our office.





## ABOUT US

Atlas Disposal was established in 1998 and is located right here in the City of Rancho Cordova. From the beginning, our approach to providing environmental services has been focused on recycling and keeping material out of the landfill.

Atlas Disposal is proud to be Rancho Cordova's hometown residential service provider since 2025. Our passionate team of local representatives has deep ties to this community and we are eager to provide you with exemplary service.



**DIAL BEFORE  
YOU PILE**  
916.288.2800



916.288.2800 • [AtlasDisposal.com](https://AtlasDisposal.com)  
[RCCustomerService@AtlasDisposal.com](mailto:RCCustomerService@AtlasDisposal.com)



3140 Gold Camp Dr., Ste. 30  
Rancho Cordova, CA 95670

Prst Std  
US Postage

**PAID**

Sacramento, CA  
Permit #316

# 2026-2027 COLLECTION CALENDAR

JANUARY 2026						
Sun	Mon	Tue	Wed	Thu	Fri	Sat
				1	2	3
4	5	6	7	8	9	10
11	12	13	14	15	16	17
18	19	20	21	22	23	24
25	26	27	28	29	30	31

FEBRUARY 2026						
Sun	Mon	Tue	Wed	Thu	Fri	Sat
1	2	3	4	5	6	7
8	9	10	11	12	13	14
15	16	17	18	19	20	21
22	23	24	25	26	27	28

MARCH 2026						
Sun	Mon	Tue	Wed	Thu	Fri	Sat
1	2	3	4	5	6	7
8	9	10	11	12	13	14
15	16	17	18	19	20	21
22	23	24	25	26	27	28
29	30	31				

APRIL 2026						
Sun	Mon	Tue	Wed	Thu	Fri	Sat
			1	2	3	4
5	6	7	8	9	10	11
12	13	14	15	16	17	18
19	20	21	22	23	24	25
26	27	28	29	30		

MAY 2026						
Sun	Mon	Tue	Wed	Thu	Fri	Sat
					1	2
3	4	5	6	7	8	9
10	11	12	13	14	15	16
17	18	19	20	21	22	23
24	25	26	27	28	29	30
31						

JUNE 2026						
Sun	Mon	Tue	Wed	Thu	Fri	Sat
	1	2	3	4	5	6
7	8	9	10	11	12	13
14	15	16	17	18	19	20
21	22	23	24	25	26	27
28	29	30				

JULY 2026						
Sun	Mon	Tue	Wed	Thu	Fri	Sat
			1	2	3	4
5	6	7	8	9	10	11
12	13	14	15	16	17	18
19	20	21	22	23	24	25
26	27	28	29	30	31	

AUGUST 2026						
Sun	Mon	Tue	Wed	Thu	Fri	Sat
						1
2	3	4	5	6	7	8
9	10	11	12	13	14	15
16	17	18	19	20	21	22
23	24	25	26	27	28	29
30	31					

SEPTEMBER 2026						
Sun	Mon	Tue	Wed	Thu	Fri	Sat
		1	2	3	4	5
6	7	8	9	10	11	12
13	14	15	16	17	18	19
20	21	22	23	24	25	26
27	28	29	30			

OCTOBER 2026						
Sun	Mon	Tue	Wed	Thu	Fri	Sat
				1	2	3
4	5	6	7	8	9	10
11	12	13	14	15	16	17
18	19	20	21	22	23	24
25	26	27	28	29	30	31

NOVEMBER 2026						
Sun	Mon	Tue	Wed	Thu	Fri	Sat
1	2	3	4	5	6	7
8	9	10	11	12	13	14
15	16	17	18	19	20	21
22	23	24	25	26	27	28
29	30					

DECEMBER 2026						
Sun	Mon	Tue	Wed	Thu	Fri	Sat
		1	2	3	4	5
6	7	8	9	10	11	12
13	14	15	16	17	18	19
20	21	22	23	24	25	26
27	28	29	30	31		

JANUARY 2027						
Sun	Mon	Tue	Wed	Thu	Fri	Sat
					1	2
3	4	5	6	7	8	9
10	11	12	13	14	15	16
17	18	19	20	21	22	23
24	25	26	27	28	29	30
31						

FEBRUARY 2027						
Sun	Mon	Tue	Wed	Thu	Fri	Sat
	1	2	3	4	5	6
7	8	9	10	11	12	13
14	15	16	17	18	19	20
21	22	23	24	25	26	27
28						

2027 CALENDAR

## RECYCLING SCHEDULE

Scan the QR code with your smartphone to find out if you have A or B week recycling collection.



- A** Week Recycling **A** Tree Recycling
- B** Week Recycling **B** Tree Recycling
- ☐ Holiday (No Collection)



**ATLAS DISPOSAL**  
 916.288.2800 • AtlasDisposal.com  
 RCCustomerService@AtlasDisposal.com



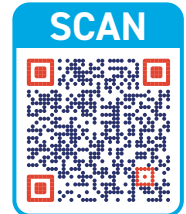


# THREE CONVENIENT WAYS TO PAY

1

## AUTO-PAY/ONLINE BILL PAY

- Access Atlas Disposal's Secure Online Bill Pay platform by **scanning this QR Code** with the camera on your smartphone or by visiting the Customer Portal on **AtlasDisposal.com**.
- Select '**Register Now**' and enter your account number and access code. Call us at 916.288.2800 to get your account information.
- Enter your **email address and password** to create your account. You will receive a verification email to complete the account setup.
- Once your account is created, you can **set up auto-pay** or you can **visit this website every month** to pay your bill.



2

## BANKING BILL PAY

- Set up a **new recurring payment** through your bank to Atlas Disposal. Please contact us if you need any billing details for your bank as part of this process.

3

## PAPER BILL PAY

- You will also receive a paper bill by mail that you can **pay directly**.
- You can pay this bill **by check** by sending your bill to:  
Atlas Disposal Industries, LLC  
PO Box 8631  
Pasadena, CA 91109-8608
- You can pay this bill **by phone** by contacting Atlas Disposal at 916.288.2800.
- You can pay this bill **in person** by visiting our office.

## STAY UP TO DATE

We encourage you to download the Atlas Disposal app to stay informed and have access to a range of helpful collection features.

- **Personalized Collection Reminders**
- **Schedule Bulky Item Pickups**
- **Pay Your Bill**
- **"What Goes Where?" Lookup Tool**
- **Report Service Issues**
- **And so much more!**



## DOWNLOAD THE ATLAS APP

